

NIGHTSTICK®
Life Depends on Light™



PATROL

INDUSTRIAL



Patrol / Industrial *Rechargeable* Page 3

TACTICAL



Tactical Page 5

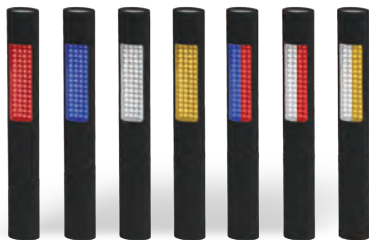
SAFETY RATED



Safety Rated ATEX *Rechargeable* Page 7-8

STREET SAFETY

SPECIAL PURPOSE



2-in-1 Full-Size Safety Lights Page 11-12



Special Purpose Hands-Free Page 13-14

HEADLAMPS



Headlamps Page 17-18

FLASHLIGHTS FOR PROFESSIONALS

DUTY



Full-Size Duty *Rechargeable* Page 4

TACTICAL



Tactical *Rechargeable* Page 6

SAFETY RATED



Safety Rated cETLus Page 9-10

SECURITY / SHOP FULL-SIZE



Security / Shop • Full-Size Page 15

MULTI-PURPOSE



Multi-Purpose • Pocket-Size Page 16

ACCESSORIES



Accessories Page 25-26

The NSR-9910-12-14 series have one of the brightest flashlight beams in their class. They are designed for public safety, military, security and industrial professionals. They incorporate the Bayco exclusive *Dual-Light INNOVATION™* that combines a sharply focused flashlight with a super-bright floodlight beam.



Deep Parabolic Reflector



Flashlight



Floodlight



Dual-Light



Strobe



FEATURES

- ❖ CREE® XPG & XPE LEDs • 50,000 hour LED life
- ❖ Momentary or constant-on flashlight
- ❖ Anti-roll Tri-Lobal design
- ❖ Rugged Xenoy® polymer housing – impact / chemical resistant
- ❖ Waterproof to 1 meter (IP-67)
- ❖ Non-slip diamond grip
- ❖ Rechargeable NiMH battery pack – no memory effect
- ❖ Three hour charge time
- ❖ Lithium CR123 battery carrier for emergency back-up power (batteries not included)
- ❖ Charging platform and AC/DC charge adapters included
- ❖ Length: 9.2 inches (233 mm) • Weight: 14.0 oz (397g)
Body diameter 1.3 inches (33 mm)
- ❖ Limited Lifetime Warranty*
- ❖ Accessories available (page 25 / 26)

PERFORMANCE

- ❖ Light Output: 220 lumen flashlight, 180 lumen floodlight, 230 lumen Dual-Light, 220 lumen strobe
- ❖ Run-time hours: NiMH / CR123 : 5 / 2 flashlight or floodlight or dual-light, 16 / 7 strobe

Included Accessories



TAIL-CAP MAGNET



NSR-9914
Dual-Switch



NSR-9912
Single Switch

Powerful Two LED
Floodlight



NSR-9910
Versatile Tail-Cap
Magnet

FLASHLIGHT				FLOODLIGHT	
220 LUMENS	2m	260m	180 LUMENS		
5.0h	1m	17500 cd	3.5h		

Model	Single Switch	Dual Switch	Standard NiMH Battery	Mobile Charging Platform	Lithium Battery Carrier	12V DC Charging Cord	World AC Power Adapter	Tail-cap Magnet	UPC 0 173989
NSR-9910	✓		✓	✓	✓	✓	✓	✓	80087 7
NSR-9912	✓		✓	✓	✓	✓	✓		19912 4
NSR-9912DC	✓		✓	✓	✓	✓			29912 1
NSR-9912LB	✓		✓						39912 8
NSR-9914		✓	✓	✓	✓	✓	✓		19914 8
NSR-9914DC		✓	✓	✓	✓	✓			29914 5
NSR-9914LB		✓	✓						39914 2

The NSR-9854 is a full-sized flashlight designed for heavy duty, full-shift use and vehicle mounting. Ideal for public safety, industrial and military work places. It incorporates the Bayco exclusive *Dual-Light INNOVATION™* that combines a focused flashlight with a super-bright floodlight beam.



Triple Beam Flashlight



4 LED
Floodlight



NSR-9854



FEATURES

- ❖ 50,000 hour LED life
- ❖ Momentary or constant-on flashlight
- ❖ Anti-roll Tri-Lobal design
- ❖ Rugged Xenoy® polymer housing – moisture / impact / chemical resistant
- ❖ Non-slip diamond grip
- ❖ Rechargeable NiMH battery pack – no memory effect
- ❖ Three hour charge time
- ❖ Charging platform and AC/DC charge adapters included
- ❖ Length: 13.6 inches (345 mm) Weight: 28.0 oz. (794 g)
Handle 1.6 x 1.8 inches (42 x 46 mm)
- ❖ Limited Lifetime Warranty*
- ❖ Accessories available (page 25 / 26)

PERFORMANCE

- ❖ Light Output: 300 lumen flashlight, 400 lumen floodlight, 500 lumen Dual-Light, 300 lumen strobe
- ❖ Run-time hours: 9 flashlight or floodlight, 24+ flashlight strobe, 4 dual-light, 7 dual-light strobe



Included Accessories

Model	UPC
NSR-9854	0 173989 89850 8

Powerful compact flashlight with a brilliant LED light output that pierces the darkness better than most full-sized flashlights. The deep reflector sharply focuses the beam to give you a visibility advantage when you need it most. The lightweight and rugged design makes it an ideal gun mount light. Perfect for duty use, toolbox or tackle box.



Deep Parabolic Reflector



TAC-200B



TAC-200T



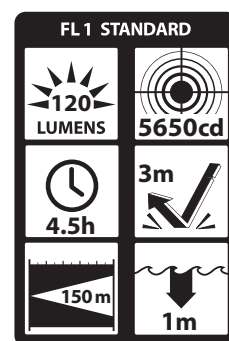
TAC-200Y

FEATURES

- ❖ CREE® XPE LED • 50,000 hour LED life
- ❖ Momentary or constant-on flashlight
- ❖ Rugged Xenoy® polymer housing – impact / chemical resistant
- ❖ Waterproof to 1 meter (IP-67)
- ❖ Non-slip diamond grip
- ❖ Two CR123 Lithium batteries included
- ❖ Removable metal pocket clip
- ❖ Length: 5.5 in (140 mm) Head Diameter: 1.25 in (32.0 mm)
Handle Diameter: 1.0 in (25.0 mm) Weight: 4.2 oz (119 g)
- ❖ Limited Lifetime Warranty*
- ❖ Accessories available (page 25 / 26)

PERFORMANCE

- ❖ Light Output: 120 lumen flashlight
- ❖ Run-time hours: 4.5 flashlight



Model	Color	UPC 0 17398
TAC-200B	Black	80116 4
TAC-200T	Tan	80117 1
TAC-200Y	Yellow	80118 8

Powerful compact flashlight with a brilliant LED light output that pierces the darkness better than most full-sized flashlights. The deep reflector sharply focuses the beam to give you a visibility advantage when you need it most. The lightweight and rugged design makes it an ideal gun mount light. Perfect for duty use, toolbox or tackle box.



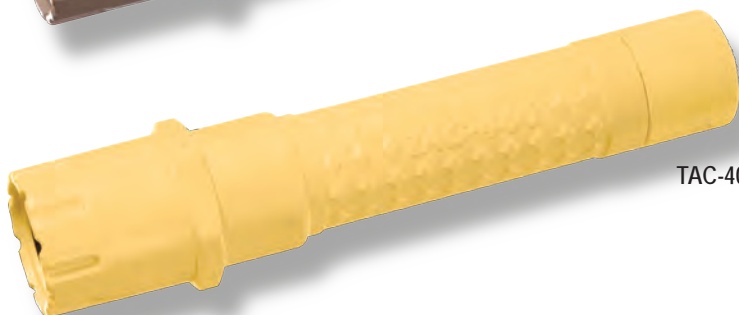
Deep Parabolic Reflector



TAC-400B



TAC-400T



TAC-400Y



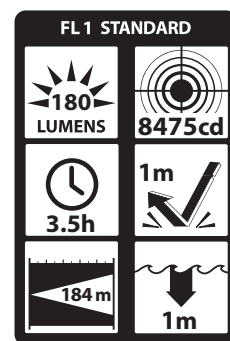
Included Accessories

FEATURES

- ❖ CREE® XPG LED • 50,000 hour LED life
- ❖ Momentary or constant-on flashlight
- ❖ Rugged Xenoy® polymer housing – impact / chemical resistant
- ❖ Waterproof to 1 meter (IP-67)
- ❖ Non-slip diamond grip
- ❖ Rechargeable lithium ion battery pack included
- ❖ Recharges in 4 hours
- ❖ Length: 6.25 in (159 mm) Head Diameter: 1.25 in (32.0 mm)
Handle Diameter: 1.0 in (25.0 mm) Weight: 5.0 oz (141 g)
- ❖ Limited Lifetime Warranty*
- ❖ Accessories available (page 25 / 26)

PERFORMANCE

- ❖ Light Output: 180 lumen flashlight
- ❖ Run-time hours: 3.5 flashlight



Model	Color	UPC 0 17398
TAC-400B	Black	80126 3
TAC-400T	Tan	80127 0
TAC-400Y	Yellow	80128 7

NIGHTSTICK[®] PRO

Life Depends on Light™

ATEX approved intrinsically safe for working in hazardous and explosion prone environments. The housing material is highly resistant to some of the most aggressive solvency chemicals including MEK. Both incorporate the Bayco exclusive *Dual-Light INNOVATION™* that combines a super bright floodlight and a focused flashlight beam.



Triple Beam Flashlight



4 LED
Floodlight

2 Push-Button
Control

XPR-9862E

Flashlight



Floodlight



Dual-Light



FEATURES

- ❖ Flashlight • Floodlight • Dual-Light
- ❖ Momentary or constant-on flashlight
- ❖ Anti-roll Tri-Lobal design
- ❖ Bright LEDs • 50,000 hour life
- ❖ Rugged Fortron® polymer housing
- ❖ Impact & moisture resistant - chemical proof
- ❖ Non-slip diamond grip
- ❖ NiMH Intrinsically safe battery pack - 3 hour charge time
- ❖ Charging platform and AC/DC charge adapters included
- ❖ Dual push-button control
- ❖ Length: 13.6 inches (345 mm) Weight: 28.0 oz. (794 g)
Handle 1.7 x 1.8 inches (42 x 46 mm)
- ❖ Accessories available (page 25 / 26)
- ❖ Limited 2 Year Warranty**

PERFORMANCE

- ❖ Light Output: 240 lumen flashlight, 320 lumen floodlight, 280 lumen Dual-Light mode
- ❖ Run-time hours: 9 flashlight or floodlight, 6 dual-light



Included Accessories

Model	UPC
XPR-9862E	0 173989 09862 5

RECHARGEABLE 9800 SERIES

ATEX Intrinsically Safe



Deep Reflector



Flashlight



Floodlight



Dual-Light



Strobe



2 LED
Floodlight

XPR-9822E

FEATURES

- ❖ Flashlight • Floodlight • Dual-Light • Strobe
- ❖ Momentary or constant-on flashlight
- ❖ Anti-roll Tri-Lobal design
- ❖ Bright LEDs • 50,000 hour life
- ❖ Rugged Fortron® polymer housing
- ❖ Impact resistant - chemical proof
- ❖ Waterproof to 1 meter (IP-67)
- ❖ Non-slip diamond grip
- ❖ NiMH Intrinsically safe battery pack - 3 hour charge time
- ❖ Charging platform and AC/DC charge adapters included
- ❖ Single push-button control
- ❖ Length: 9.6 inches (244 mm) Weight: 10.6 oz. (300 g)
- ❖ Handle 1.3 inches (31 mm)
- ❖ Accessories available (page 25 / 26)
- ❖ Limited 2 Year Warranty**

PERFORMANCE

- ❖ Light Output: 160 lumen flashlight, 200 lumen floodlight, 300 lumen Dual-Light mode, 180 lumen strobe
- ❖ Run-time hours: 6 flashlight, 5 floodlight, 2 dual-light, 16 strobe



Included Accessories

Model	UPC
XPR-9822E	0 173989 09822 9

Designed for the industrial market, the XPP-5400 series are lighting tools that are intrinsically safe to use in potentially explosive atmospheres. Compact, powerful light output and lightweight. The 5422G and 5422B incorporate the Bayco exclusive *Dual-Light INNOVATION™* that combines a tightly focused flashlight beam for long throw and a super bright floodlight for close-in work.



Deep Parabolic Reflector



Broad Beam Floodlight



Flashlight



Floodlight



Dual-Light



XPP-5422G



XPP-5422B

FEATURES

- ❖ CREE® XPE LEDs • 50,000 hour LED life
- ❖ Sharply focused flashlight beam
- ❖ Non-slip grip
- ❖ Momentary or constant-on flashlight
- ❖ Textured two push-button control
- ❖ Rugged polymer housing
- ❖ Impact and chemical resistant
- ❖ Waterproof to 1 meter (IP-67)
- ❖ Built-in pocket clip and lanyard
- ❖ Requires 3 AA batteries (not included)
- ❖ Length: 7.0 in (178 mm) Head Diameter: 1.8 in (46 mm) Handle 1.0 x 1.3 (25 x 33 mm) Weight: 6.3 oz (178 g)
- ❖ Limited Lifetime Warranty*

PERFORMANCE

- ❖ Light Output: 80 lumen flashlight, 80 lumen floodlight, 160 lumen Dual-Light
- ❖ Run-time hours: 14.5 flashlight or floodlight, 7 dual-light



cETLus Listed Intrinsically Safe for use in Class I II III Div 1 Groups A,B,C,D,E,F & G Hazardous Locations • MSHA Approved



FL 1 STANDARD	FLASHLIGHT			FLOODLIGHT		
	80 LUMENS	2m	95m	80 LUMENS	1m	2256cd
	14.5h			14.5h		

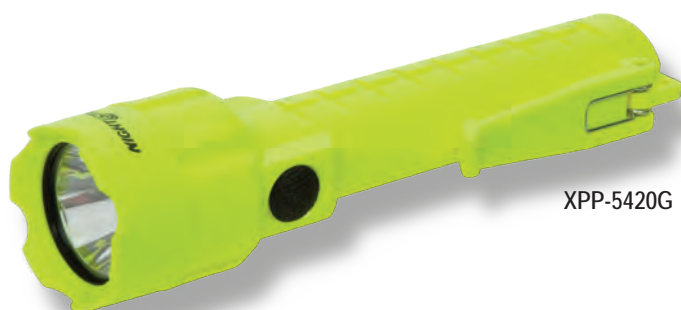
Model	Color	UPC
XPP-5422G	Green	80093 8
XPP-5422B	Black	80094 5



Designed for the hazardous workplace environment, the XPP-5420 series are lighting tools that are intrinsically safe to use in potentially explosive atmospheres. Compact, powerful, tightly focused flashlight beam with a deep reflector for long throw.



Deep Parabolic Reflector



XPP-5420G



XPP-5420B

FEATURES

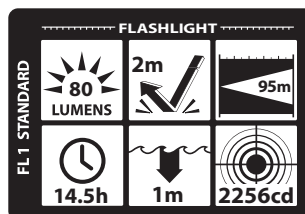
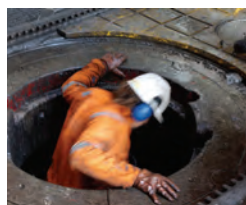
- ❖ CREE® XPE LED • 50,000 hour LED life
- ❖ Sharply focused flashlight beam
- ❖ Momentary or constant-on flashlight
- ❖ Non-slip grip
- ❖ Textured push-button control
- ❖ Rugged polymer housing
- ❖ Impact and chemical resistant
- ❖ Waterproof to 1 meter (IP-67)
- ❖ Built-in pocket clip and lanyard
- ❖ Requires 3 AA batteries (not included)
- ❖ Length: 7.0 in (178 mm) Head Diameter: 1.8 in (46 mm)
Handle 1.0 x 1.3 (25 x 33 mm) Weight: 6.3 oz (178 g)
- ❖ Limited Lifetime Warranty*

PERFORMANCE

- ❖ Light Output: 80 lumen flashlight
- ❖ Run-time hours: 14.5 flashlight



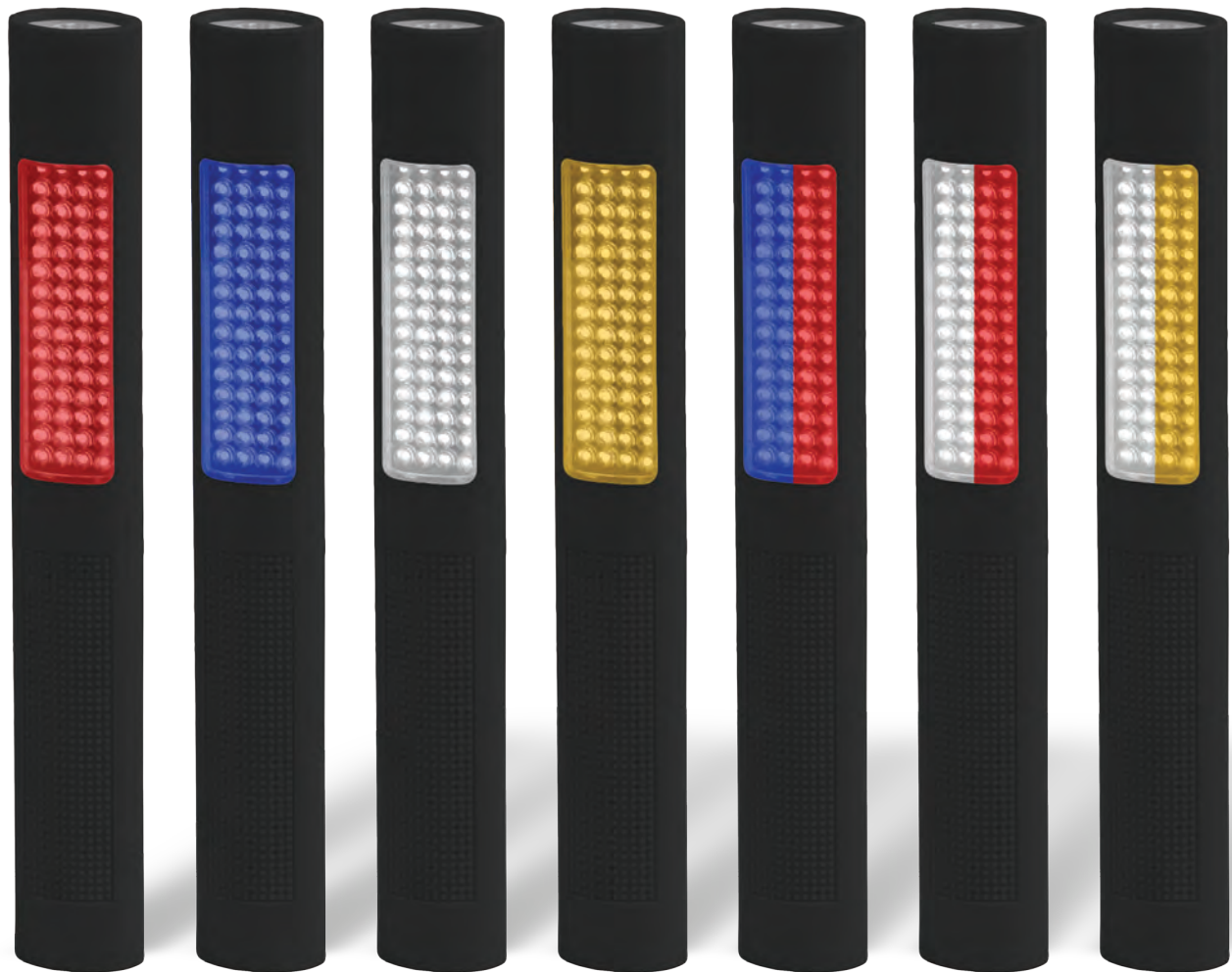
cETLus Listed Intrinsically Safe for use in
Class I II III Div 1 Groups A,B,C,D,E,F & G
Hazardous Locations • MSHA Approved



Model	Color	UPC 0 17398
XPP-5420G	Green	80091 4
XPP-5420B	Black	80092 1



The 2-in-1 all LED Safety Light Series combines a full-size flashlight and a flashing safety light in a compact package. These lights are designed specifically for public safety, military, utility services and security professionals. Two push-buttons independently control the flashlight and the safety light functions. The NIGHTSTICK *PRO* Safety Light series are by far the safest lights to carry when directing traffic or marking a hazardous area.



NSP-1162

NSP-1164

NSP-1166

NSP-1168

NSP-1170

NSP-1172

NSP-1174/76

NON-RECHARGEABLE 1100 SERIES

2-in-1 Full-Size Safety Lights



Deep Parabolic Reflector

Safety Light
NSP-1170 Shown



Flashlight



Light with
magnetic clip

**Included
Accessories**



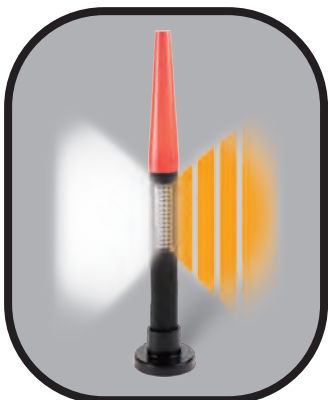
Lanyard ring
(lanyard not included)

FEATURES

- ❖ Flashlight 150 lumens • Run-time 10 hrs
- ❖ Safety light 120 lumens
- ❖ 2 push-button control
- ❖ Momentary or constant-on flashlight
- ❖ Constant-on or flashing safety light
- ❖ Non-slip textured body and soft-touch finish
- ❖ Ultra-bright LEDs - 35,000 hour life
- ❖ Rugged engineered polymer housing – impact, moisture and chemical resistant
- ❖ 4 premium AA alkaline batteries (included)
- ❖ Length: 10.9" (277 mm) • Weight: 8.2 oz. (233 g)
- ❖ Limited Lifetime Warranty*
- ❖ Accessories available (page 25 / 26)

PERFORMANCE

Model	Safety Light Color	Safety Light Functions	Constant Safety Light Run-Time Hours	Flashing Safety Light Run-Time Hours	UPC 0 17398
NSP-1162	Red	Constant - half power - flashing	4 Full Power 8 half Power	16	80102 7
NSP-1164	Blue	Constant - half power - flashing	4 Full Power 8 half Power	16	80103 4
NSP-1166	White	Constant - half power - flashing	4 Full Power 8 half Power	16	80104 1
NSP-1168	Amber	Constant - half power - flashing	4 Full Power 8 half Power	16	80105 8
NSP-1170	Blue & Red	Constant-alternating flash	4 Full Power	16	80106 5
NSP-1172	White & Red	Constant-alternating flash	4 Full Power	16	80107 2
NSP-1174	Amber	Constant white flood-flashing amber	30 LED Floodlight = 8	24	80119 5
NSP-1176	White & Amber	Constant-alternating flash	4 Full Power	16	80114 0

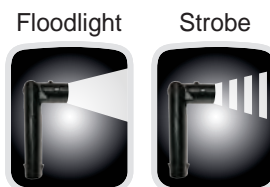
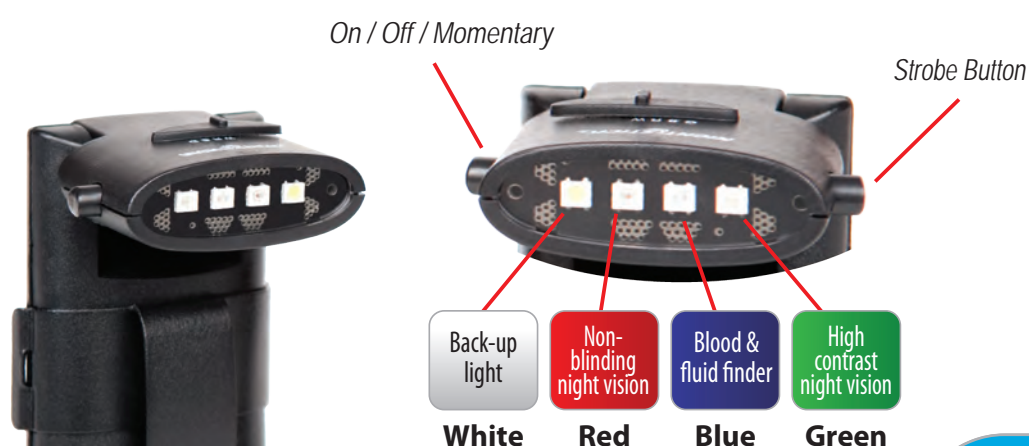


NSP-1174 Shown
with traffic cone and
magnetic base
accessories

NIGHTSTICK[®] PRO

Life Depends on Light™

Designed specifically for hands-free illumination while working, hunting or searching. The four high output LEDs are ideal for standard illumination plus enhanced viewing in low light levels, viewing for blood identification, high contrast in darkness and viewing hidden markers. The strobe function can be activated for all colors, adding an extra measure of user safety. Light weight and easily clips to pockets, belt or web.



NSP-9404B



FEATURES

- ❖ 4 color slide switch
- ❖ 35,000 hour LEDs
- ❖ Engineered polymer housing • moisture and impact resistant
- ❖ Multi-position tilting head
- ❖ On/off with momentary function
- ❖ Strobe operates in all color modes
- ❖ Reversible / removable metal pocket clip fits pocket – belt – web gear
- ❖ 3 premium AAA batteries included
- ❖ Sliding battery access door with locking screw
- ❖ Height: 4.3 (109 mm) Width 1.6 (40 mm) Depth: 0.6 (no clip) (15 mm) Weight: 2.5 oz (70.9 g)
- ❖ Limited Lifetime Warranty*



NSP-9404T



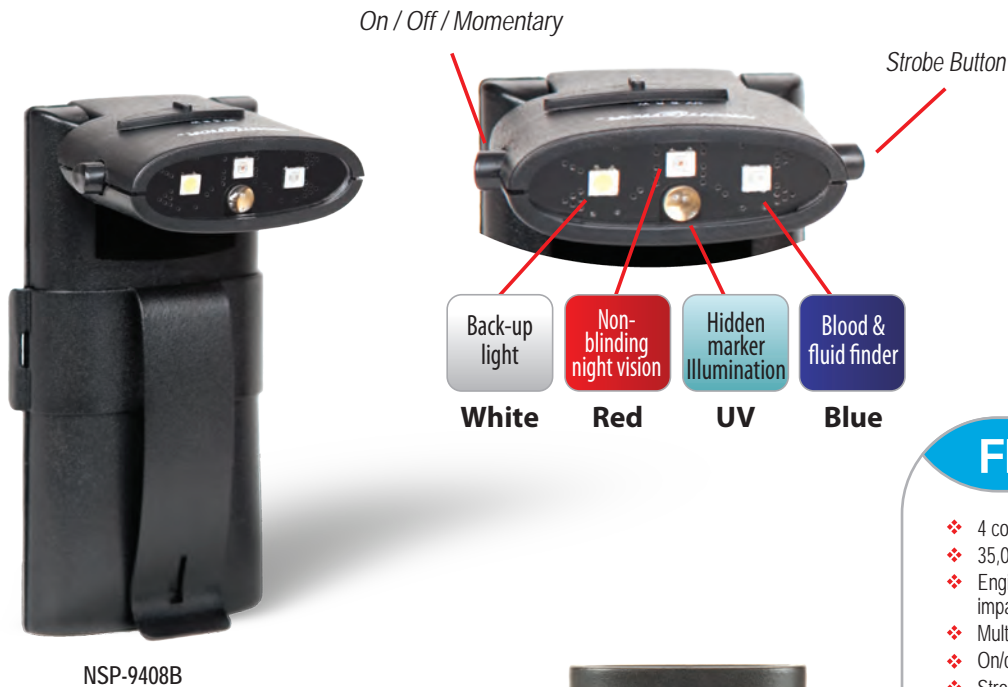
Model	Color	UPC 0 17398
NSP-9404B	Black	80096 9
NSP-9404T	Tan	80097 6

PERFORMANCE

Light Mode	Lumens	Run-Time Hrs
WHITE - flood	25	7
RED - flood	4	7
BLUE - flood	4	7
GREEN - flood	4	7
STROBE	---	15

NON-RECHARGEABLE 9400 SERIES

Special Purpose Hands-Free



FEATURES

- ❖ 4 color slide switch
- ❖ 35,000 hour LEDs
- ❖ Engineered polymer housing • moisture and impact resistant
- ❖ Multi-position tilting head
- ❖ On/off with momentary function
- ❖ Strobe operates in all color modes
- ❖ Reversible / removable metal pocket clip fits pocket – belt – web gear
- ❖ 3 premium AAA batteries included
- ❖ Sliding battery access door with locking screw
- ❖ Height: 4.3 (109 mm) Width 1.6 (40 mm) Depth: 0.6 (no clip) (15 mm) Weight: 2.5 oz (70.9 g)
- ❖ Limited Lifetime Warranty*



Model	Color	UPC 0 17398
NSP-9408B	Black	80098 3
NSP-9408T	Tan	80099 0

PERFORMANCE

Light Mode	Lumens	Run-Time Hrs
WHITE - flood	25	7
RED - flood	4	7
BLUE - flood	4	7
UV-spot	365 nm	7
STROBE	---	15

The NSP-1160 and NSP-1260 represent the next generation of full-size flashlights for automotive, industrial and security professionals. Bright light output, lightweight and long run-times make conventional tube style flashlights obsolete. The NSP-1160 and 1260 incorporate the Bayco exclusive *Dual-Light INNOVATION[™]* that combines a super bright floodlight and a focused flashlight beam, all in a compact package.



Deep Parabolic Reflector



FEATURES

- ❖ 2 push-button control
- ❖ Momentary or constant-on flashlight
- ❖ Full & half power floodlight for extended run-time
- ❖ Oval shape with non-slip textured body
- ❖ Soft-touch finish
- ❖ Bright LEDs - 35,000 hour life
- ❖ Rugged engineered polymer housing – impact, moisture and chemical resistant
- ❖ 4 premium AA alkaline batteries included
- ❖ Length: 10.9 in (277 mm) • Weight: 8.2 oz (232 g)
- ❖ 1 Year Warranty***
- ❖ Accessories available (page 25 / 26)

PERFORMANCE

- ❖ Light Output: 150 lumen flashlight, 120 lumen floodlight full power, 60 lumen floodlight half-power, 270 lumen Dual-Light
- ❖ Run-time hours: 10 flashlight, 4 floodlight full power, 10 floodlight half power, 3 dual-light



NSP-1260



NSP-1160

Stand & magnetic clip for Hands Free Lighting



Model	Color	UPC 0 17398
NSP-1260	Orange	80030 3
NSP-1160	Black	80027 3

Exceptional light output for their size. Extremely thin and oval shape fits in a pocket, tool belt or toolbox. Perfect for inspection, as a back-up light or emergencies. All incorporate the Bayco exclusive *Dual-Light INNOVATION™* that combines a super bright floodlight and a focused flashlight beam, all in a compact package.

FEATURES

- ❖ Bright LEDs • 35,000 hour life
- ❖ Rugged engineered polymer housing
- ❖ Soft touch finish
- ❖ Sizes and light outputs for all applications
- ❖ Single push-button controls 4 functions
- ❖ Impact & moisture resistant
- ❖ Premium AAA alkaline batteries included
- ❖ Accessories included – see below
- ❖ 1 Year Warranty***
- ❖ Other accessories available (page 25 / 26)

Flashlight



Floodlight



Dual-Light



Deep Parabolic Reflector



NSP-1206

NSP-1212

NSP-1224

NSP-1236

NSP-1136

NSP-1124

NSP-1112

NSP-1106

L=Lumens

PERFORMANCE

Model	Flashlight (Run-Time hrs)	Floodlight (Run-Time hrs)	Dual-Light (Run-Time hrs)	Dimensions L-Wt	Accessories Included	Color	UPC 0 17398
NSP-1136	65 L (12)	36 LED • 72 L (7)	37 LED • 137 L (5)	L 8.8 in (223 mm) Wt 5.7 oz (162 g)	Lanyard • Stand	Black	11136 2
NSP-1236					Holster • Clip-Magnet	Orange	31236 3
NSP-1124	45 L (12)	24 LED • 48 L (10)	25 LED • 93 L (6)	L 7.9 in (200 mm) Wt 5.2 oz (147 g)	Lanyard • Stand	Black	11124 9
NSP-1224					Holster • Clip-Magnet	Orange	31224 0
NSP-1112	25 L (18)	12 LED • 24 L (15)	13 LED • 49 L (8)	L 6.9 in (175 mm) Wt 3.0 oz (85 g)	Lanyard • Pocket-Clip	Black	11 112 6
NSP-1212					Holster • Pocket-Clip	Orange	21212 0
NSP-1106	4 LED • 8 L (8)	6 LED • 12 L (5)	10 LED • 20 L (3.5)	L 4.4 in (112 mm) Wt 1.8 oz (51 g)	Lanyard • Pocket-Clip	Black	11106 5
NSP-1206						Orange	21206 9

The NSP-2200 Headlamp Series are the ideal lighting tool solution when needing both hands while working or playing. These lights are designed for professional and recreational use. A single push-button controls three light modes so you always have the right type of illumination while working or on the move. All headlamps incorporate the Bayco exclusive *Dual-Light INNOVATION[™]* that combines a very bright floodlight and a focused spotlight beam, all in a compact package.

Spotlight Floodlight Dual-Light



NSP-2232



NSP-2212

FEATURES

- ❖ Spotlight • Floodlight • Dual-Light
- ❖ Super-bright white LEDs • 35,000 hr. life
- ❖ Moisture, impact and chemical resistant
- ❖ Single button light control
- ❖ Adjustable tilt
- ❖ Non-slip headband
- ❖ 3 premium AAA alkaline batteries included
- ❖ Soft-touch matte finish
- ❖ Limited Lifetime Warranty*
- ❖ Width: 2.8 in (71 mm) Height: 2.4 in (61mm) Depth: 1.7 in (43 mm) Weight: 3.4 oz (96 g)

2232 / 2212 PERFORMANCE

- ❖ Spotlight 1 LED • 65 lumens
- ❖ Floodlight 12 LED • 24 lumens
- ❖ Dual-Light 13 LED • 89 lumens
- ❖ Run-time hours: 18 spotlight or floodlight, 10 dual-light



Adjustable Tilt

Model	Color	UPC 0 17398
NSP-2232	Orange	80019 8
NSP-2212	Black	81006 7

NON-RECHARGEABLE 2200 SERIES

Headlamps

Ultra-Bright • Hands-Free



NSP-2228



NSP-2208

FEATURES

- ❖ Spotlight • Floodlight • Dual-Light
- ❖ Super-bright white LEDs • 35,000 hr. life
- ❖ Moisture, impact and chemical resistant
- ❖ Single button light control
- ❖ Adjustable tilt
- ❖ Non-slip headband
- ❖ 3 premium AAA alkaline batteries included
- ❖ Soft-touch matte finish
- ❖ Limited Lifetime Warranty*
- ❖ Width: 2.8 in (71 mm) Height: 2.4 in (61mm) Depth: 1.7 in (43 mm) Weight: 3.4 oz (96 g)

2228 / 2208 PERFORMANCE

- ❖ Spotlight 4 LED • 8 lumens
- ❖ Floodlight 4 LED • 8 lumens
- ❖ Dual-Light 8 LED • 16 lumens
- ❖ Run-time hours: 48 spotlight or floodlight, 28 dual-light

Adjustable Tilt



Model	Color	UPC 0 17398
NSP-2228	Orange	80018 1
NSP-2208	Black	81005 0

OVERVIEW OF TASK LIGHTING SAFETY IN HAZARDOUS ENVIRONMENTS

Fire and Explosion Risk

Industrial and production operations are prime environments for the potential build-up of combustible gases, liquids, oxygen and ignition sources. Fire and explosion hazards can occur in that environment. Working in a hazardous environment requires fixed and portable task lighting to be intrinsically safe to keep personnel and property safe from explosion and fire.

Intrinsic Safety

A device that is intrinsically safe means that it is safe to use in hazardous work environments and by itself will not cause a fire or explosion. Maintaining intrinsic safety requires that the light be used properly and not tampered with so the intrinsically safe capability remains in tact.

ATEX Directive

The European based ATEX directive defines the equipment and work environment that is allowed to function in an explosive atmosphere. The regulations apply to all equipment intended for use in explosive atmospheres, either electrical or mechanical, including protective systems. The directive covers a large range of equipment where a potentially explosive atmosphere may be present.

NIGHTSTICK ATEX



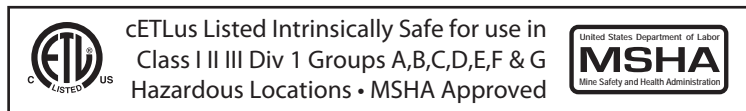
NIGHTSTICK XPR series lights are ATEX approved intrinsically safe

- Equipment category 1 (Zone 0)
- Above ground locations where flammable gas is always present or for long periods in environments up to ethyl methyl ether gas groups
- Where the surface temperature does not exceed 135° and the ignition temperature is >135 ≤200

This correlates to UL Hazardous Locations Services

- Class I, Division 1, Groups C/D, T4

NIGHTSTICK XPP series are ETL and MSHA approved intrinsically safe



Three Location Classes

Class I: where there is a presence of flammable gases, liquids or vapors.

Class II: where combustible dusts are present.

Class III: where there are easily ignitable fibers or flyings.

Seven Hazardous Combustible Material Groups (The groups include but are not limited to)

- Group A Acetylene
- Group B Hydrogen
- Group C Ethylene, carbon monoxide
- Group D Propane, gasoline, naphtha, benzene, butane, ethyl alcohol, acetone, methane
- Group E Metals including aluminum, magnesium (Div. 1 only)
- Group F Carbonaceous dusts including coal, carbon black, coke
- Group G Dusts not included in E and F including wood, plastics, flour, starch or grain dusts





Dual-Light INNOVATION™



Flashlight

Flashlight

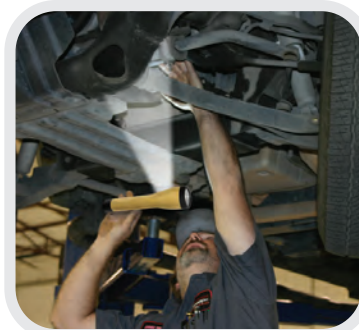
Focused beam with a bright center spot for distant illumination



Floodlight

Floodlight

Broad even lighting without the bright center spot for close-in illumination



Dual-Light

Activate both for maximum safety in work area or while walking



DUAL-LIGHT INNOVATION™

For over 85 years flashlight functionality has not changed very much. Sizes and shapes have changed, but not the way a flashlight is used. Flashlights have always been used to spot objects at a distance... a task that most flashlights perform well. Flashlights are also used to illuminate objects at close range... something that conventional flashlights do not do well. Until NIGHTSTICK, there were few options.

Flashlight







NIGHTSTICK incorporates reflectors that capture and shape the maximum amount of available light from the latest high-output LEDs.

Floodlight

NIGHTSTICK incorporates a broad beam floodlight for the best lighting solution for wide-area or close-in viewing.

Dual-Light

Combining a separate floodlight with a flashlight into a single housing, is the NIGHTSTICK Dual-Light INNOVATION. The floodlight spreads the light over an area four times broader than the flashlight beam with no hot spots that impair visibility. Only NIGHTSTICK Offers Flashlight • Floodlight • Dual-light capability.

	NSR-9910	NSR-9912	NSR-9914	NSR-9854	TAC-200	TAC-400	XPR-9862E	XPR-9822E	XPP-5420	
	•	•	•	•			•	•		
ANSI FL1					•	•			•	
Strobe Mode	•	•	•	•				•		
Rechargeable Pack	NiMH	NiMH	NiMH	NiMH		Lithium	NiMH	NiMH		
Alkaline AA									•	
Alkaline AAA										
Lithium CR123					•					
Engineered Polymer Housing	•	•	•	•	•	•	•	•	•	
Soft-Touch Finish										
Water proof (IP-67)	•	•	•		•	•		•	•	
Chemical Proof Housing							•	•		
Impact / Moisture / Chemical Resistant	•	•	•	•	•	•	•	•	•	
Single Body Switch	•	•						•	•	
Two Body Switches			•	•			•			
Tail-Cap Switch			•		•	•				
Limited Lifetime Warranty	•	•	•	•	•	•			•	
Limited 2 Year Warranty							•	•		
1 Year Warranty										
							•	•		
									•	
							•	•		
									•	
	•	•	•	•	•	•	•	•	•	

FEATURE OVERVIEW

	XPP-5422	NSP-1160	NSP-1260	NSP-1106 NSP-1206	NSP-1112 to 1136	NSP-1212 to 1236	NSP-1162 to 1176	NSP-9404	NSP-9408	NSP-2212 / 2232 2208 / 2228
	•	•	•	•	•	•				•
	•									
								•	•	
	•	•	•				•			
				•	•	•		•	•	•
	•	•	•	•	•	•	•	•	•	•
		•	•	•	•	•	•			•
	•									
	•	•	•	•	•	•	•	•	•	•
				•	•	•				•
	•	•	•				•	•	•	
	•						•	•	•	
		•	•	•	•	•				•
	•									
	•									
	•	•	•	•	•	•	•	•	•	•

WARRANTY INFORMATION

***Limited Lifetime Warranty** • Product is warranted to be free from defects in workmanship and materials for the lifetime of the original owner. Includes the LEDs, housing, lenses, electronics and switches. Rechargeable batteries and chargers are warranted for a period of two years. Primary batteries, normal wear and abuse are excluded.

****Limited 2 Year Warranty** • XPR Intrinsically Safe products are warranted to be free from defects in workmanship and materials for two years from the date of purchase, this includes the LEDs, housing, lenses, electronics and switches. The battery and charger are warranted for one year. Normal wear and abuse are excluded.

*****1 Year Warranty** • Product is warranted to be free from defects in workmanship and materials for one year. Batteries, normal wear and abuse are excluded.

	Model		ANSI FL1	Strobe Mode	Power Source Charge Time	Colors	LED Life hrs	Flashlight Lumens Run-Time Hours Flashlight / Strobe	Floodlight Lumens Run-Time Hours
	NSR-9910	✓	✓		Rechargeable NiMH 3 hrs	Yellow	50k	220 L 5 / 16	180L 5
	NSR-9912	✓	✓		Rechargeable NiMH 3 hrs	Black	50k	220 L 5 / 16	180L 5
	NSR-9914	✓	✓		Rechargeable NiMH 3 hrs	Black	50k	220 L 5 / 16	180L 5
	NSR-9854	✓	---	✓	Rechargeable NiMH 3 hrs	Black	50k	300L 9 / 24+	400L 9
	TAC-200B	---	✓	---	2 Lithium CR123	Black Tan Yellow	50k	120 L 4.5	N/A
	TAC-200T	---	✓	---	2 Lithium CR123	Black Tan Yellow	50k	120 L 4.5	N/A
	TAC-200Y	---	✓	---	2 Lithium CR123	Black Tan Yellow	50k	120 L 4.5	N/A
	TAC-400B	---	✓	---	Rechargeable Lithium Ion 4 hrs	Black Tan Yellow	50k	180 L 3.5	N/A
	TAC-400T	---	✓	---	Rechargeable Lithium Ion 4 hrs	Black Tan Yellow	50k	180 L 3.5	N/A
	TAC-400Y	---	✓	---	Rechargeable Lithium Ion 4 hrs	Black Tan Yellow	50k	180 L 3.5	N/A
	XPR-9862E	✓	---	---	Rechargeable NiMH 3 hrs	Orange	50k	240L 9	320L 9
	XPR-9822E	✓	---	✓	Rechargeable NiMH 3 hrs	Orange	50k	160L 6 / 16	200L 5
	XPP-5420B	---	✓	---	3 AA Alkaline Required	Black Green	50k	80L 14.5	N/A
	XPP-5420G	---	✓	---	3 AA Alkaline Required	Black Green	50k	80L 14.5	N/A
	XPP-5422B	✓	✓	---	3 AA Alkaline Required	Black Green	50k	80L 14.5	80L 14.5
	NSP-1160	✓	---	---	4 AA Alkaline	Black	35k	150L 10	120L 4 full / 10 half
	NSP-1260	✓	---	---	4 AA Alkaline	Orange	35k	150L 10	120L 4 full / 10 half
	NSP-1106	✓	---	---	2 AAA Alkaline	Black Orange	35k	8L 8	6 LED 12L 5
	NSP-1206	✓	---	---	2 AAA Alkaline	Black Orange	35k	8L 8	6 LED 12L 5
	NSP-1112	✓	---	---	4 AAA Alkaline	Black Orange	35k	25L 18	12 LED 24L 15
	NSP-1212	✓	---	---	4 AAA Alkaline	Black Orange	35k	25L 18	12 LED 24L 15
	NSP-1124	✓	---	---	4 AAA Alkaline	Black Orange	35k	45L 12	24 LED 48L 10
	NSP-1224	✓	---	---	4 AAA Alkaline	Black Orange	35k	45L 12	24 LED 48L 10
	NSP-1136	✓	---	---	4 AAA Alkaline	Black Orange	35k	65L 12	36 LED 72L 7
	NSP-1236	✓	---	---	4 AAA Alkaline	Black Orange	35k	65L 12	36 LED 72L 7
	NSP-1162	---	---	---	4 AA Alkaline	Black	35k	150L 10	120L Flashing safety light 16
	NSP-1164	---	---	---	4 AA Alkaline	Black	35k	150L 10	
	NSP-1166	---	---	---	4 AA Alkaline	Black	35k	150L 10	
	NSP-1168	---	---	---	4 AA Alkaline	Black	35k	150L 10	
	NSP-1170	---	---	---	4 AA Alkaline	Black	35k	150L 10	Alternating flash 16
	NSP-1172	---	---	---	4 AA Alkaline	Black	35k	150L 10	
	NSP-1174	---	---	---	4 AA Alkaline	Black	35k	150L 10	120L Flashing safety light 24
	NSP-1176	---	---	---	4 AA Alkaline	Black	35k	150L 10	Alternating flash 16
	NSP-9404B	---	---	✓	3 AAA Alkaline	Black Tan	35k	White 25L • Red 4L • Blue 4L • Green 4L Run-time 7 hrs each mode • Strobe 15 hrs	
	NSP-9404T	---	---	✓	3 AAA Alkaline	Black Tan	35k	White 25L • Red 4L • Blue 4L • Green 4L Run-time 7 hrs each mode • Strobe 15 hrs	
	NSP-9408B	---	---	✓	3 AAA Alkaline	Black Tan	35k	White 25L • Red 4L • Blue 4L • UV 365 nm Run-time 7 hrs each mode • Strobe 15 hrs	
	NSP-9408T	---	---	✓	3 AAA Alkaline	Black Tan	35k	White 25L • Red 4L • Blue 4L • UV 365 nm Run-time 7 hrs each mode • Strobe 15 hrs	
	NSP-2208	✓	---	---	3 AAA Alkaline	Black Orange	35k	Spotlight: 4 LEDs - 8L Floodlight: 4 LEDs - 8L Dual-Light: 8 LEDs - 16 L	
	NSP-2228	✓	---	---	3 AAA Alkaline	Black Orange	35k	Spotlight: 4 LEDs - 8L Floodlight: 4 LEDs - 8L Dual-Light: 8 LEDs - 16 L	
	NSP-2212	✓	---	---	3 AAA Alkaline	Black Orange	35k	Spotlight: 1 LED- 65L Floodlight: 12 LEDs - 24L Dual-Light: 13 LED- 89 L	

PRODUCT SPECS

Dual-Light Lumens Run-Time Hours	Special Features	Dimensions / Weight Housing Material	Included Accessories	Warranty	UPC 0 17398
230L 5	Deep reflector for long beam throw Flashlight strobe • Magnetic tail-cap	Length: 9.2 inches (233 mm) • Weight: 14.0 oz. (397g)• Body diameter 1.3 inches (33 mm) Xenoy®	AC & DC Chargers • CR123 battery carrier Rechargeable NiMH battery pack	Limited Lifetime	80087 7
230L 5	Deep reflector for long beam throw Flashlight strobe			Limited Lifetime	19912 4 19914 8
500 4	Triple-beam flashlight Strobe flashlight or floodlight	Length: 13.6 inches (345 mm) Weight: 28.0 oz. (794 g) Handle 1.6 x 1.8 inches (42 x 46 mm) • Xenoy®	AC & DC Chargers Rechargeable NiMH battery pack	Limited Lifetime	89850 8
N/A	Deep reflector for long beam throw Removable metal pocket clip Long gun mountable	Length: 5.5 in (140 mm) Head Diameter: 1.25 in (32.0 mm) Handle Diameter: 1.0 in (25.0 mm) Weight: 4.2 oz (119 g) • Xenoy®	2 premium lithium CR123 batteries	Limited Lifetime	80116 4 80117 1 80118 8
N/A	Deep reflector for long beam throw	Length: 6.25 in (159 mm) Head Diameter: 1.25 in (32.0 mm) Handle Diameter: 1.0 in (25.0 mm) Weight: 5.0 oz (141 g) • Xenoy®	AC & DC Chargers Rechargeable lithium battery pack CR123 battery carrier	Limited Lifetime	80126 3 80127 0 80128 7
280L 6	Safety rated ATEX approved (Zone 0)	Length: 13.6 inches (345 mm) Weight: 28.0 oz. (794 g) Handle 1.6 x 1.8 inches (42 x 46 mm) Fortron®	Rechargeable NiMH battery pack AC & DC Chargers	2 year limited	09862 5
300L 2		Length: 9.6 inches (244 mm) Weight: 10.6 oz. (300 g) Handle 1.3 inches (33 mm) Fortron®		2 year limited	09822 9
N/A	Safety rated cETLus Listed Intrinsically Safe Class I III Div 1 Groups A,B,C,D,E,F,G MSHA Approved	Length: 7.0 in (178 mm) Head Diameter: 1.8 in (46 mm) Handle 1.0 x 1.3 (25 x 33 mm) Weight: 6.3 oz (178 g) Engineered polymer	Integrated pocket clip Lanyard	Limited Lifetime	80092 1 80091 4
160L 7.2				Limited Lifetime	80094 5 80093 8
270L 3	Full or half power floodlight for extended run-time Soft-touch finish	Length: 10.9" (277 mm) • Weight: 8.2 oz. (232 g) Engineered polymer	4 premium AA alkaline batteries Hands-free stand	1 year	80027 3
270L 3		Length: 10.9" (277 mm) • Weight: 8.2 oz. (232 g) Engineered polymer	4 premium AA alkaline batteries Hands-free stand & magnetic clip	1 year	80030 3
10 LED 20L 3.5	<ul style="list-style-type: none">Thin oval shapeLight weightSoft-touch finishSingle switch controls 4 functionsTactical black or high-visibility orange color	Length 4.4" (112 mm) Weight 1.8 oz (51 g) Engineered polymer	2 premium AAA alkaline batteries Lanyard & pocket clip	1 year	11106 5 21206 9
13 LED 49L 8		Length 6.9" (175 mm) Weight 3.0 oz (85 g) Engineered polymer	4 premium AAA alkaline batteries 1112 lanyard & pocket clip 1212 pocket clip & holster	1 year	11112 6 21212 0
25 LED 93L 6		Length 7.9" (200 mm) Weight 5.2 oz (147 g) Engineered polymer	4 premium AAA alkaline batteries 1124 lanyard & stand 1224 holster & clip-magnet	1 year	11124 9 31224 0
37 LED 137L 5		Length 8.8" (223 mm) Weight 5.7 oz (162 g) Engineered polymer	4 premium AAA alkaline batteries 1136 lanyard & stand 1236 holster & clip-magnet	1 year	11136 2 31236 3
N/A		Red safety light Constant • half power • flashing	Length: 10.9" (277 mm) Weight: 8.2 oz. (232 g) Engineered polymer	4 premium AA alkaline batteries Magnetic clip & lanyard ring	Limited Lifetime
N/A	Blue safety light Constant • half power • flashing	Limited Lifetime			80103 4
N/A	White safety light Constant • half power • flashing	Limited Lifetime			80104 1
N/A	Amber safety light Constant • half power • flashing	Limited Lifetime			80105 8
N/A	Blue & red safety light Constant or alternating flash	Limited Lifetime			80106 5
N/A	White & red safety light Constant or Alternating flash	Limited Lifetime			80107 2
N/A	White & amber safety light Constant white • alternating flash	Limited Lifetime			80119 5
N/A	White & amber safety light Constant • alternating flash	Limited Lifetime			80114 0
	4 color LED pocket light	Height: 4.3 (109 mm) Width 1.6 (40 mm) Depth: 0.6 (no clip) (15 mm) Weight: 2.5 oz (70.9 g) Engineered polymer	3 premium AAA alkaline batteries Reversible / removable pocket clip	Limited Lifetime	80096 9 80097 6
	3 color LED pocket light Plus UV for reading hidden markers			Limited Lifetime	80098 3 80099 0
Run-time Spotlight 48 hrs Floodlight 48 hrs Both 28 hrs	Single switch operation • Adjustable tilt Impact, moisture and chemical resistant Non-slip headband	Width 2.8 in (71 mm) Height: 2.4 in (61mm) Depth: 1.7 in (43 mm) Weight: 3.4 o (96 g). Engineered polymer	3 premium AAA alkaline batteries	1 year	81005 0 80018 1
Run-time Spotlight 18 hrs Floodlight 18 hrs Both 10 hrs				1 year	81006 7 80019 8

		9822E	9862E	9854	9910	9912	9914	1106	1112	1124	1136	1206	1212	1224	1236	1260	1160	1162	1164	1166	1168	1170	1172	1174	TAC-200	UPC
BATTERIES																										
NSR-9810BATT	Standard battery - green				X																					98102 6
NSR-9850BATT	Standard battery - green (NSR-9854)			X																						09850 2
XPR-9822BATT	Intrinsically safe battery - red (XPR-9822E)	X																								80088 4
XPR-9862BATT	Intrinsically safe battery - red (XPR-9862E)		X																							80089 1
CHARGERS																										
9914-ACCORD	AC charging adapter for US, UK, Australia, Canada and Europe				X																					81046 3
9914-CARRIER	Adapts 9910/12/14 from NiMH to replaceable lithium CR-123 batteries				X																					80043 3
9914-DCCORD	12V DC charging cord (cigarette lighter connector)– temporary charging power from a vehicle				X																					81047 0
9914-DW	12V DC direct wiring kit for automobile installation – permanent charging power from a vehicle				X																					80044 0
NSR-9850CHGR	Charger Kit - includes AC & DC adapters (NSR-9854)			X																						79850 1
NSR-9914CHGR1	Single charger (comes with AC power adapter)				X																					80045 7
NSR-9914CHGR5	5-bank AC charger				X																					80046 4
XPR-9810CHGR	Charger-intrinsically safe - includes AC & DC adaptors (XPR-9822E) also charges spare battery outside of the flashlight	X			X																					98105 7
XPR-9850CHGR	Charger - intrinsically safe - includes AC & DC adaptor (XPR-9862E)		X																							99850 5



*PRODUCT
ACCESSORIES*

[illegible]



Innovation By



640 S. Sanden Blvd.

Wylie, TX 75098

800-233-2155

www.baycoproducts.com